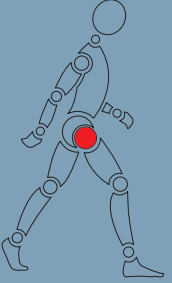



OVER 30 YEARS OF EXPERIENCE IN MEDICAL TECHNOLOGY
30
YEARS
OVER 30 YEARS OF EXPERIENCE IN MEDICAL TECHNOLOGY



BSC Macro Cup



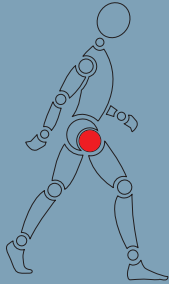
 swiss design
swiss made
swiss quality

stemcup

Medical products in motion



BSC Macro Cup



The reliable BSC Hip Cup system has been expanded with a macrostructured BSC Macro cup variant.

The new BSC Macro cup version, is a pressfit cup slightly flattened at the pole and larger in diameter than the pre-reamed acetabular bed in the bone.

11 diameter sizes from 46 to 66 mm allow an optimal adaptation to the anatomical conditions. The good secondary stability is achieved by a rough macrostructured surface, so that a good osteointegration is ensured.

Complementary to the closed BSC Macro Cup, versions with 3 screw holes, 6 screw holes (Multihole) and with additional screw options through the cup rim (Clusterhole) are available.

The BSC Cup is available with an added titanium-hydroxylapatite-coating to enhance the osseointegrative ability.

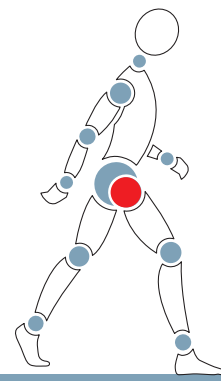
Polyethylene, Xonit X-PE, Xonit-E X-PE and ceramic inlays are available. 4 inlays sizes cover all 11 cup sizes. The polyethylene inlays are also available in a 10° dysplasia version with an anti-dislocation shoulder.

It's possible to use ballheads with 36mm diameter from cup size 50 with ceramic and Xonit X-PE-Inlays. From cup size 54 it's possible to use 40 ballheads.

This leads to significantly more ROM, greater dislocation paths and less impingement against smaller ball heads and brings the patient felt more range of motion.

stemcup

Medical products in motion



Prosthesis design

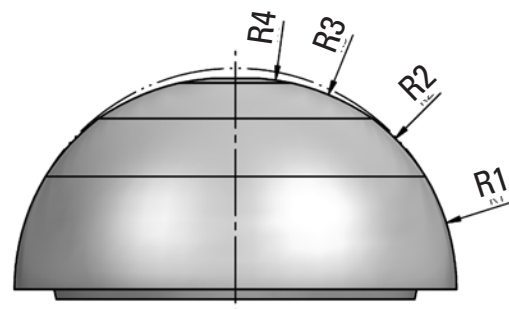
- 11 cup sizes of \varnothing 46 - 66 mm
- Closed type, 3 hole type, 6 hole type (Multihole) and Clusterhole type with screw connection possibility on cup rim
- Material: Titan ISO 5832-3
- in addition with titanium plasma coating (HA) available
- Cup \varnothing = reamer \varnothing + oversize (oversize increasing with the cup size)
- flattened cup pole
- no instrument access on the tapers contact surface, thus avoiding damage to the Ceramic-Inlay



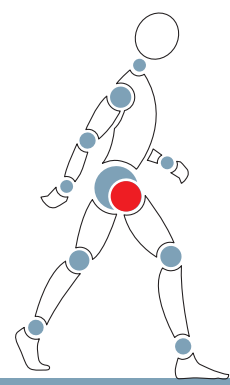
BSC-Macro Cup 3 hole cementless

Implants - Sterility

All the implants of the manufacturer which are described in this Surgical Technique are sterile. Resterilization is not allowed.



BSC pressfit cup with different radiuses



E-IFU
 The E-IFU (Instruction for use) is available online on www.stemcup.com by entering the corresponding E-IFU Code. There can be requested a printed version of the IFU any time.
 Delivery of a printed version takes 1-7 days. Please send your direct order by email to administration@stemcup.ch, or send us a fax on the appropriate fax number of your country.

Tribological pairings

Due to the special shape of the BSC-Macro cup the thickness of the PE-Inlays are bigger than corresponding competitive products.
 Because of the special shape it's also possible to use bigger ballheads in smaller cups if a ceramic or X-link PE tribological pairing is designated.

Inlay

	Ø28	Ø32	Ø36	Ø40
PE-Inlay standard	size 46-66	size 50-66	_____	_____
PE-Inlay dysplasia	size 46-66	size 50-66	_____	_____
Xonit X-PE-Inlay standard	size 46-66	size 46-66	size 50-66	size 54-66
Xonit X-PE-Inlay dysplasia	size 46-66	size 50-66	size 54-66	_____
Xonit-E X-PE-Inlay standard	size 46-66	size 46-66	size 50-66	size 54-66
Xonit-E X-PE-Inlay dysplasia	size 46-66	size 50-66	size 54-66	_____
Ceramic-Inlay	size 46-66	size 46-66	size 50-66	size 54-66



UHMWPE Inlay



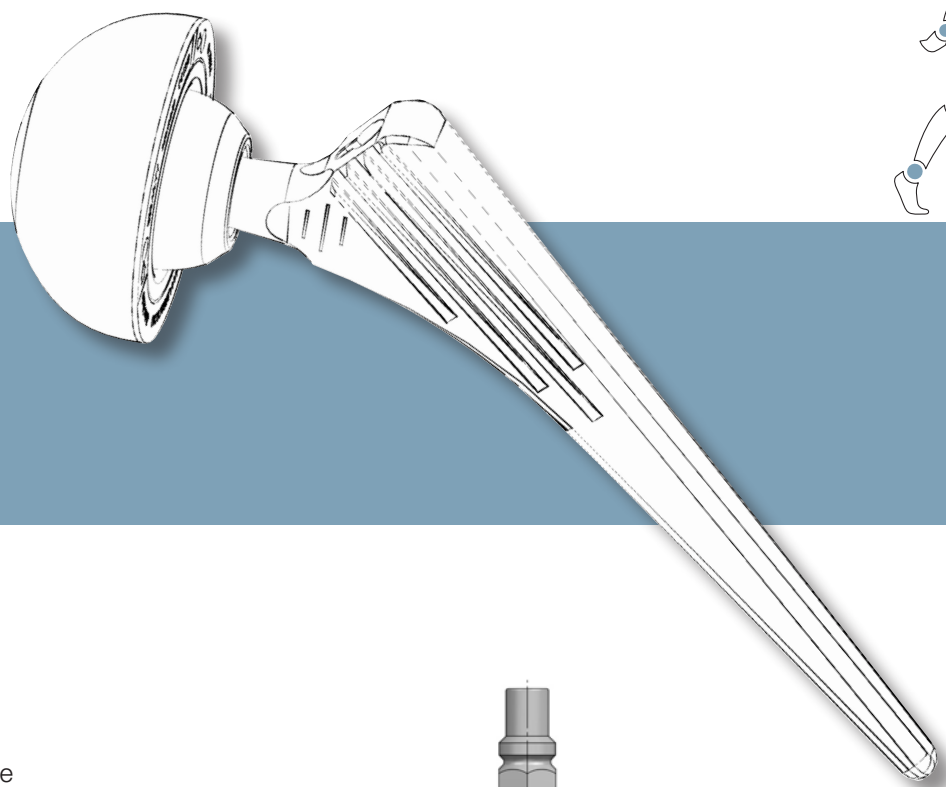
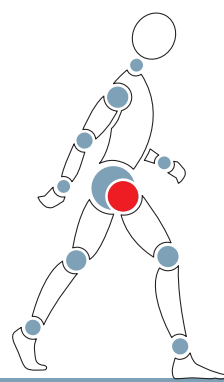
Xonit X-PE Inlay



Xonit-E X-PE Inlay
 (with Vitamin E as antioxidant)



Ceramic-Inlay

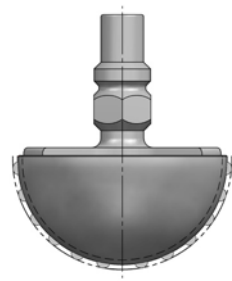


Combination

The modular design of the BSC Macro Pressfitcup- and the XentraX Screwcupsystem allows to change from the BSC Macro cupsystem to the XentraX Screwcupsystem during the operation.

The instrumentation for both cupsystems is the same excepting the setting instruments.

The inlays for both cupsystems are the same.



Spherical reamer for XentraX and BSC Cup



BSC Macro Cup



XentraX Screwcup



UHMWPE Inlay



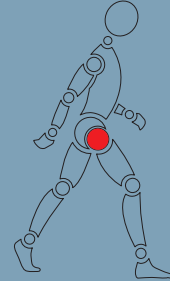
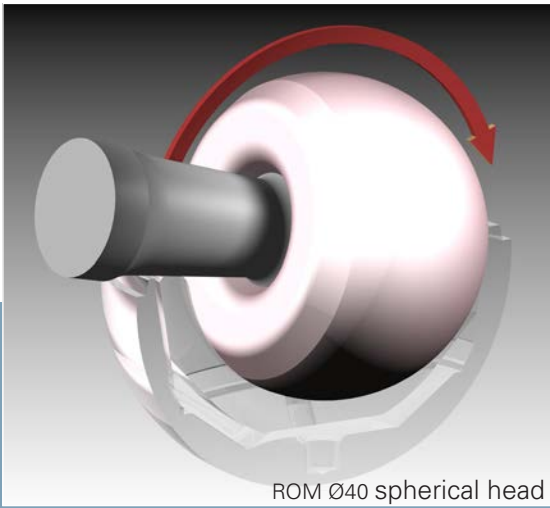
Xonit X-PE Inlay



Xonit-E X-PE Inlay (with Vitamin E as antioxidant)



Ceramic-Inlay

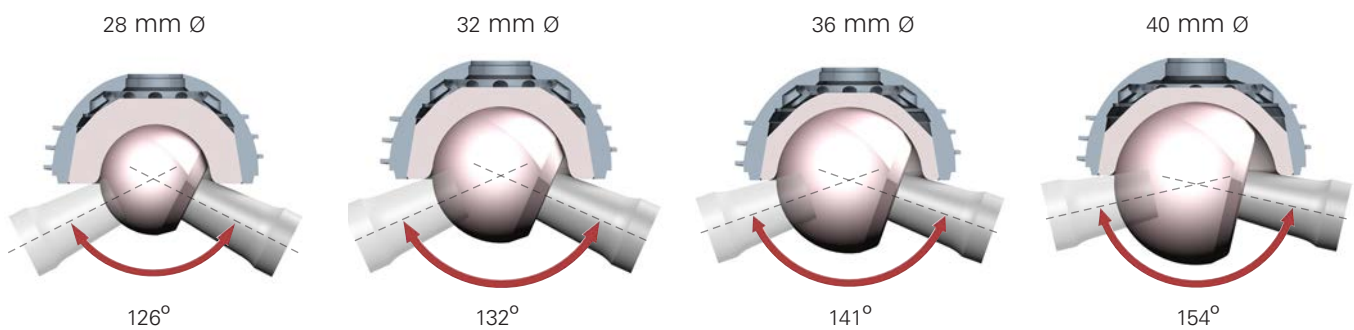


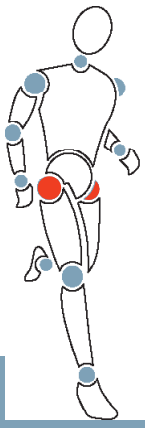
Range of Motion (ROM)

The possibility of big inlays in small cups enables an early change to big ballheads. Bigger ballheads increase the ROM of the cup, which ends up in more mobility for the patient.

Bigger ballheads also increase the luxation-security and the risk of impingement is reduced.

- smallest BSC-cup size 46 → ROM of 132° → 32 spherical head
- BSC-cup size 50 → ROM of 141° → 36 spherical head
- BSC-cup size 54 → ROM of 154° → 40 spherical head



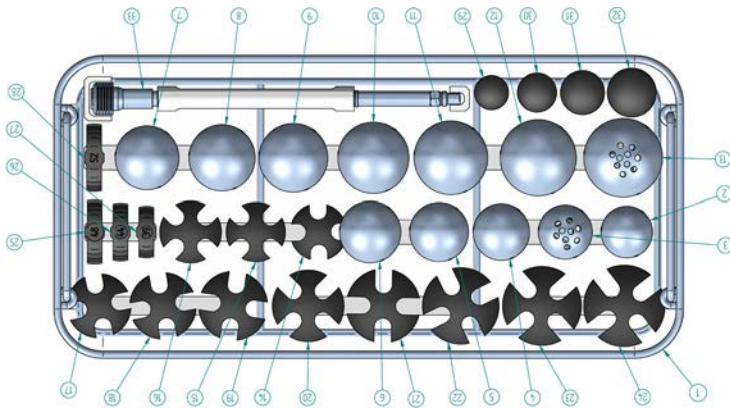


Instruments - Sterility

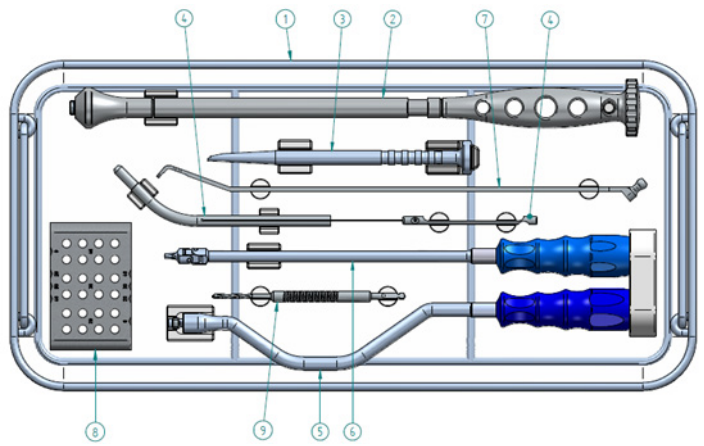
The instruments are not sterile when they are delivered. Before use, they must be reprocessed and sterilized according to Stemcup's Instrument-Leaflet. The instruction leaflet for instruments „Recommendation Care - Cleaning - Maintenance - Sterilization“ is available upon request, resp. inclosed in the instrument set.
 Instrument manufacturers and distributors accept no responsibility for sterilization of products by the customer. The applicable legal regulations for the reprocessing of medical devices in your country must be observed. In countries where stricter requirements apply, these must be adhered to.

Instrumentation

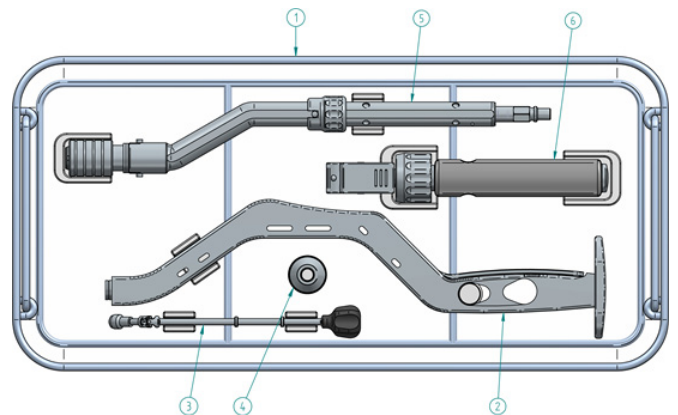
Simple and functional instrumentation supports a constantly controllable and safe preparation and insertion of the implant.



BSC Cup - Instruments Tray 1



BSC Macro Cup - Instruments Tray 2



BSC Macro Cup - Instruments Tray 3



Stemcup – central and close to you!



We are there when you need us:

Switzerland Headquarters
Stemcup Medical Products AG
Aargauerstrasse 180
CH- 8048 Zürich
Tel. +41 (0)43 311 85 00
Fax. +41 (0)43 311 85 09
info@stemcup.ch
www.stemcup.ch

Germany
Stemcup Medical Products GmbH
Wallbrunnstrasse 24
D-79539 Lörrach
Tel. +49 (0) 7621 162 00 49
Fax. +49 (0) 7621 161 97 78
info@stemcup.de
www.stemcup.de

Austria
Stemcup Medical Products Austria GmbH
Schwindgasse 20/1/4
A-1040 Wien
Tel. +43 (0) 1 890 40 53
Fax. +43 (0) 1 890 40 54
info@stemcup.at
www.stemcup.at

Distribution partner in:

Australia	France
Italy	Brazil
Spain	South Africa
Japan	India