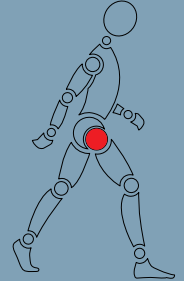




BILOX®delta - Al₂O₃/ZrO₂ - ISO 6474-2

Sz.	ø28 mm	ø32 mm	ø36 mm	ø40 mm
S	179.01.28	180.01.32	181.01.36	182.01.40
M	179.02.28	180.02.32	181.01.36	182.02.40
L	179.03.28	180.03.32	181.03.36	182.03.40
XL	-	180.04.32	181.04.36	182.04.40

Ballheads



We are there when you need us:

Switzerland Headquarters
Stemcup Medical Products AG
Aargauerstrasse 180
CH- 8048 Zürich
Tel. +41 (0)43 311 85 00
Fax. +41 (0)43 311 85 09
info@stemcup.ch
www.stemcup.ch

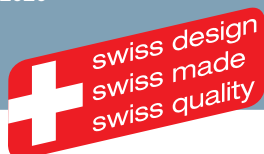
Germany
Stemcup Medical Products GmbH
Wallbrunnstrasse 24
D-79539 Lörrach
Tel. +49 (0) 7621 162 00 49
Fax. +49 (0) 7621 161 97 78
info@stemcup.de
www.stemcup.de

Austria
Stemcup Medical Products GmbH
Schwindgasse 20/1/4
A-1040 Wien
Tel. +43 (0) 1 890 40 53
Fax. +43 (0) 1 890 40 54
info@stemcup.at
www.stemcup.at

Lenght difference of ballheads

28 mm Ø ballhead: 3.5 mm
32 mm Ø ballhead: 4.0 mm
36 mm Ø ballhead: 4.0 mm
40 mm Ø ballhead: 4.0 mm

Ed.12.2020



CoCrMo - ISO 5832-12

Sz.	ø22 mm	ø28 mm	ø32 mm	ø36 mm	ø40 mm
S	-	188.01.28	189.01.32	186.01.36	187.01.40
M	177.02.22	188.02.28	189.02.32	186.02.36	187.02.40
L	177.03.22	188.03.28	189.03.32	186.03.36	187.03.40
XL	-	188.04.28	189.04.32	186.04.36	187.04.40
XXL	-	188.05.28	189.05.32	-	-



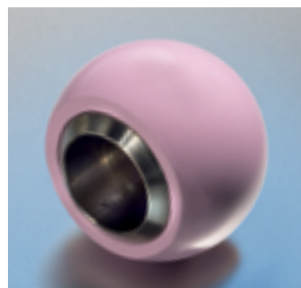
M30 - ISO 5832-9

Sz.	ø28 mm	ø32 mm
S	197.02.28	198.02.32
M	197.01.28	198.01.32
L	197.03.28	198.03.32
XL	197.04.28	198.04.32
XXL	197.05.28	198.05.32



Stemox - Al₂O₃ - ISO 6474-1

Sz.	ø28 mm	ø32 mm
S	184.01.28	185.01.32
M	184.02.28	185.02.32
L	184.03.28	185.03.32



BILOX®OPTION - Al₂O₃/ZrO₂ - ISO 6474-2

Sz.	ø28 mm	ø32 mm	ø36 mm
S	193.01.28	196.01.32	199.01.36
M	193.02.28	196.02.32	199.02.36
L	193.03.28	196.03.32	199.03.36
XL	193.04.28	196.04.32	199.04.36

stemcup

Medical products in motion