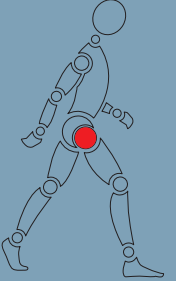
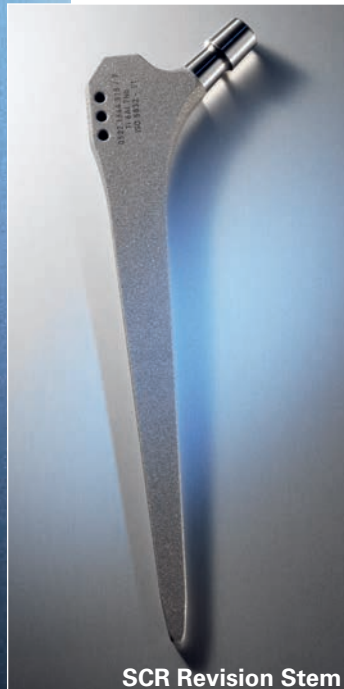


SCS/SCL Stem
(standard / lateral)

SCR Revision Stem



SCL Stem



SCR Revision Stem

 swiss design
swiss made
swiss quality

SCS Stem

stemcup

Medical products in motion



SCS/SCL Stem

(standard / lateral)

SCR Revision Stem

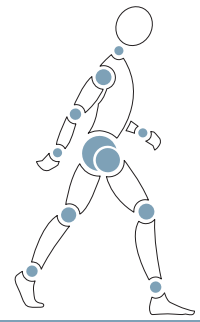
In SCS/SCL Stem and SCR Revision Stem with an extensive fixation, we offer long-proven implants that are made of forged titanium alloy Ti6Al7Nb according to ISO 5832-11 / ASTM F 1295 and Ti6Al4V Titanium-vanadium according to ISO 5832-3 / ASTM F136 / ASTM F1472 and thanks to their corundum-blasted roughened surface, exhibit an optimal osseointegration.

The long-proven rectangular double-tapered design ensures a high rotational, primary and secondary stability. These are prerequisites for an early postoperative weight-bearing and a maximum restoration of the patient's mobility.

This stem system can be used with all age groups and is suitable both for primary implantations and revision procedures.

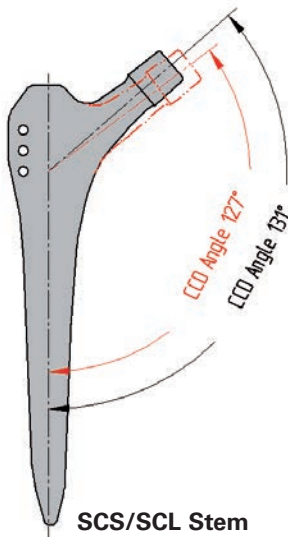
The standard SCS Stem is available in 12 sizes (01-10), the lateral SCL Stem in 9 sizes (1-9) and the SCR Revision Stem in 9 sizes (3-11).

SCL Stem

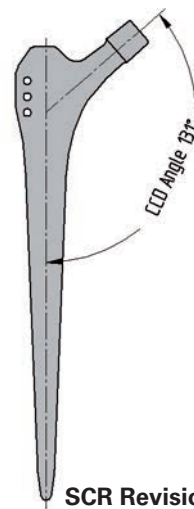


Prosthesis design

- Standard, lateralised and revision design
- Double-tapered straight stem with rectangular profile
- Fixation in meta-diaphyseal region
- 12/14 Eurocone
- Material: forged alloy Ti6Al7Nb, ISO 5832-11 / Ti6Al4V ISO 5832-3
- Optional Ti/HA coating
- Corundum-blasted surface with a roughness R_a of 4 - 6 μm



SCS/SCL Stem



SCR Revision Stem

CCD Angle

The standard SCS Stem as well as the SCR Revision Stem have a 131° degree CCD angle while the lateral SCL Stem has a 127° degree CCD angle.

Standard SCS Stem

- 12 sizes (01-10)
- CCD angle 131°

Lateral SCL Stem

- 9 sizes (1-9)
- CCD angle 127°

SCR Revision Stem

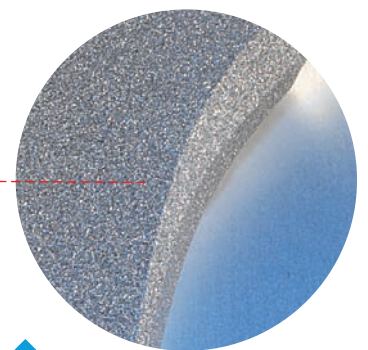
- 9 sizes (3-11)
- CCD angle 131°



SCS Stem standard

SCS Stem Ti/HA

SCR Revision Stem



The SCS/SCL stem system is made of a long-proven titanium alloy Ti6Al7Nb (ISO 5832-11) / Ti6Al4V (ISO 5832-3). The corundum-blasted surface has a surface roughness R_a of 4-6 μm .



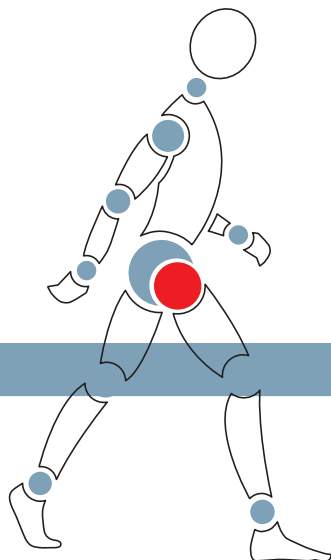
• 13.01.2004
Male patient born in 1947



• 19.02.2004
1 month postoperative

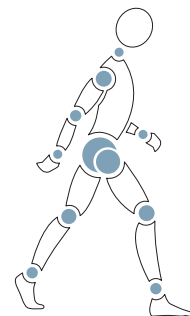


• 19.05.2005
15 months postoperative



stemcup

Medical products in motion



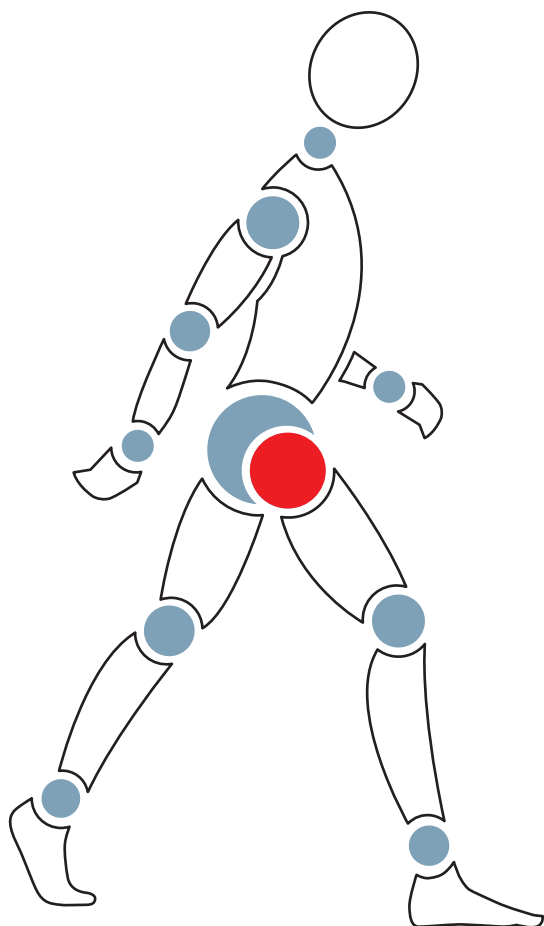
A simple and well-arranged instrumentation allows a convenient and correct implantation of the SCS/SCL stem. After the reaming of the femur there is a possibility to determine the correct size and length with the trial stem or directly with the trial rasp. An exact match between the instrument and the implant allows a reliable, efficient and precise work. Suitable trial heads are available for intraoperative manipulation.

Long rasps are available on requests.

stemcup

Medical products in motion

Stemcup – central and close to you!



We are there when you need us:

Switzerland Headquarters
Stemcup Medical Products AG
Aargauerstrasse 180
CH- 8048 Zürich
Tel. +41 (0)43 311 85 00
Fax. +41 (0)43 311 85 09
info@stemcup.ch
www.stemcup.ch

Germany
Stemcup Medical Products GmbH
Wallbrunnstrasse 24
D-79539 Lörrach
Tel. +49 (0) 7621 162 00 49
Fax. +49 (0) 7621 161 97 78
info@stemcup.de
www.stemcup.de

Austria
Stemcup Medical Products Austria GmbH
Schwindgasse 20/1/4
A-1040 Wien
Tel. +43 (0) 1 890 40 53
Fax. +43 (0) 1 890 40 54
info@stemcup.at
www.stemcup.at

Distribution partner in:

Italy
France
Spain
Brazil
Japan

India
South Africa
Iran
Turkey

stemcup

Medical products in motion